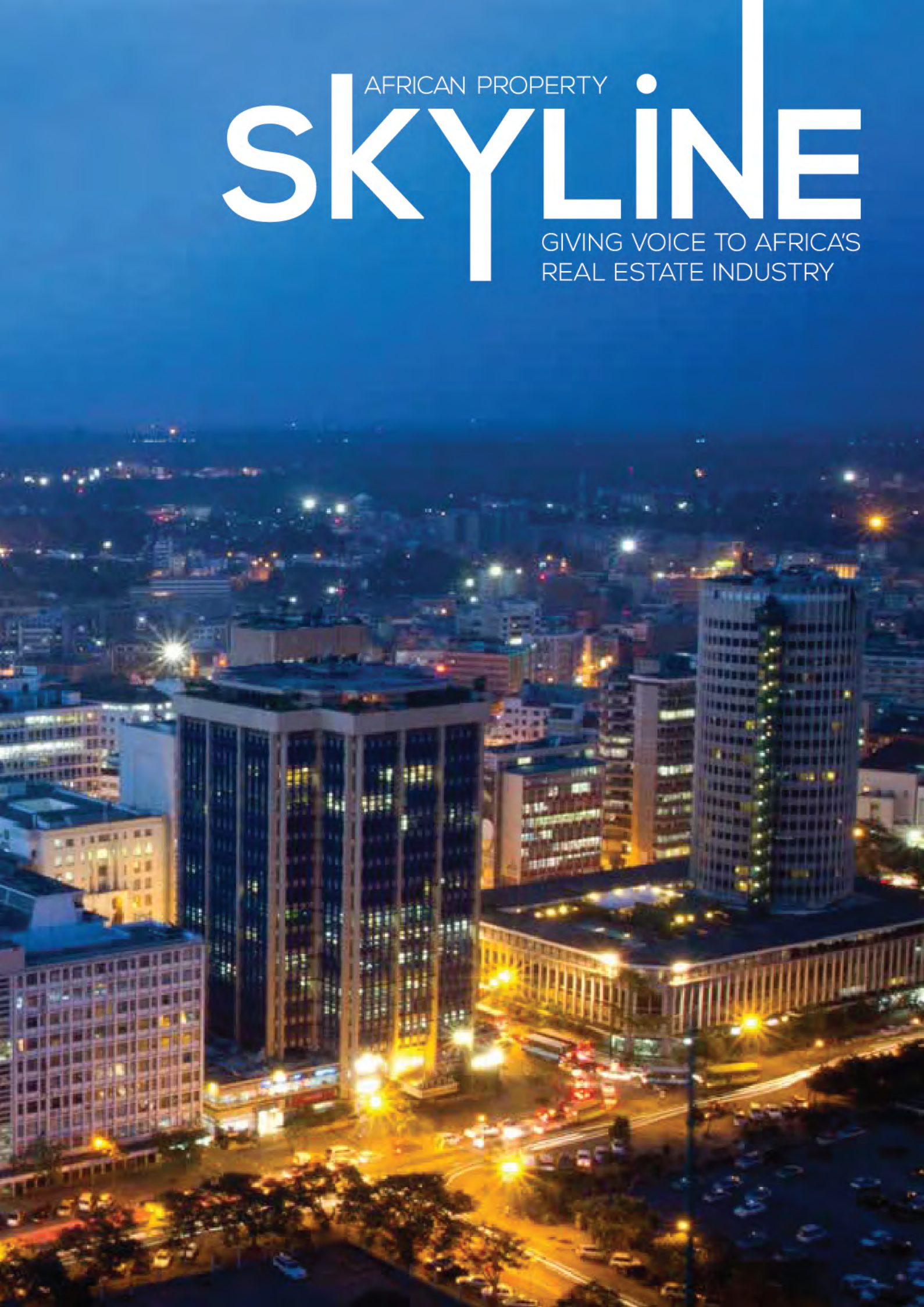


AFRICAN PROPERTY

SKYLINE

GIVING VOICE TO AFRICA'S
REAL ESTATE INDUSTRY



BECOME A THOUGHT LEADER IN AFRICA
PROFILE YOUR COMPANY AND PROJECTS
IN A LEADING AFRICAN PROPERTY
PUBLICATION



At API events, we believe that Africa is well-poised to deliver on its promise of growth. Our role is and has been to create and facilitate a space for companies, organizations and individuals to engage with each other around issues relating to property investment, through our conferences and other activities.

This magazine is in line with our mission, to provide a platform that drives growth in African real estate investment whilst assisting the continent in realizing its full potential, and we look forward to providing the most up to date African Property news, key industry insights, learnings from on the ground experiences and ultimately giving a voice to the African real estate sector.

ADVERTORIAL BENEFITS:

Distributed to over 20,000 Africa property and investment focused subscribers

Global reach through international publishing company and host, 3DIssue

Hardcopies distributed at Africa's largest property conferences with leading investors, property professionals and media:

- The EAPI Summit, Nairobi [450 delegates]
- The API Summit, Johannesburg [600 delegates]
- The WAPI Summit, Lagos [350 delegates]
- ZamReal, Lusaka [250 delegates]

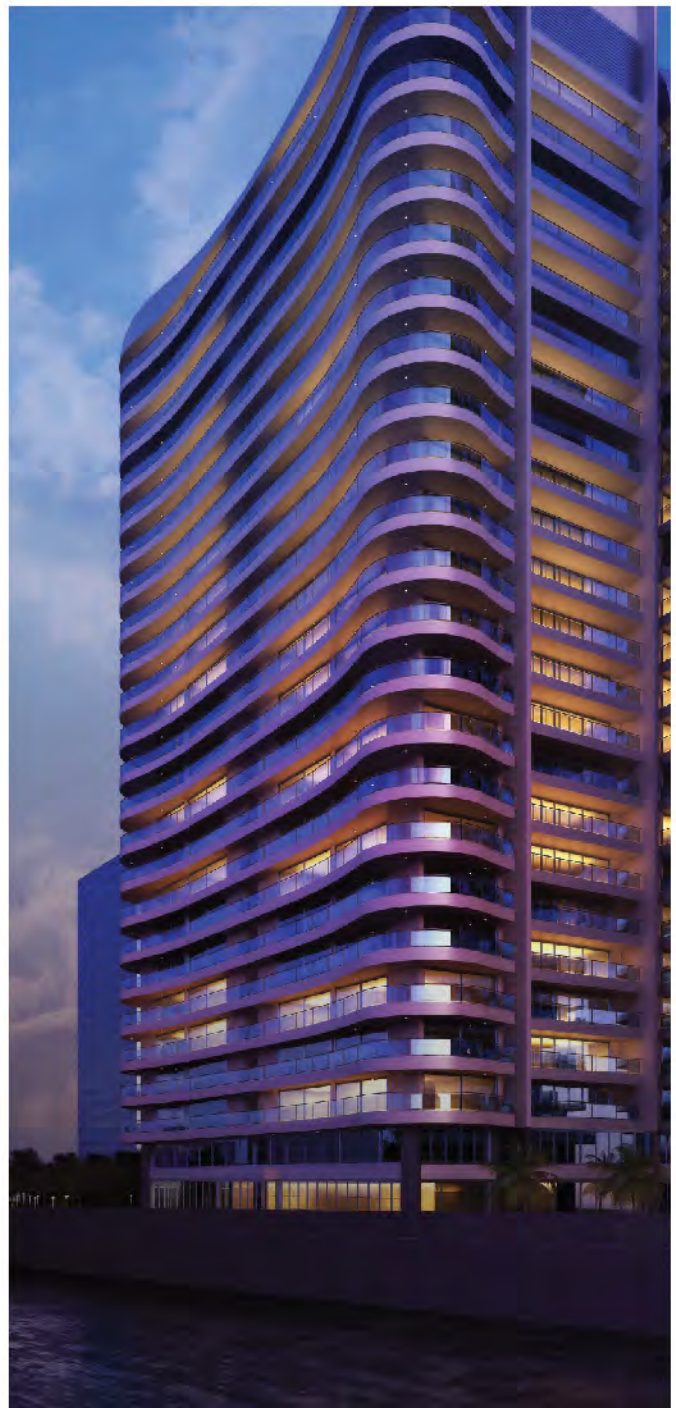
Social media marketing and exposure

Reliable and up to date metrics for tracking magazine views and exposure

AFRICA PROPERTY SKYLINE IS THE
FIRST MAGAZINE DEDICATED TO
SUB-SAHARAN AFRICA REAL ESTATE
DEVELOPMENT AND INVESTMENT.

Skyline magazine is hosted on the following websites:

- API Events Website: www.apievents.com
- Skyline Website: www.africaskylinemag.com





SKYLINE MAGAZINE: SPECIFICATIONS & RATE CARD

FULL PAGE ADVERT

BLEED
220mm x 307mm

TYPE
170mm x 277mm

TRIM
210mm x 297mm

HALF PAGE ADVERT

BLEED
220mm x 158mm

TYPE
170mm x 128mm

TRIM
210mm x 148mm

DOUBLE PAGE ADVERT

*** BLEED**
430mm x 307mm

TYPE
380mm x 277mm

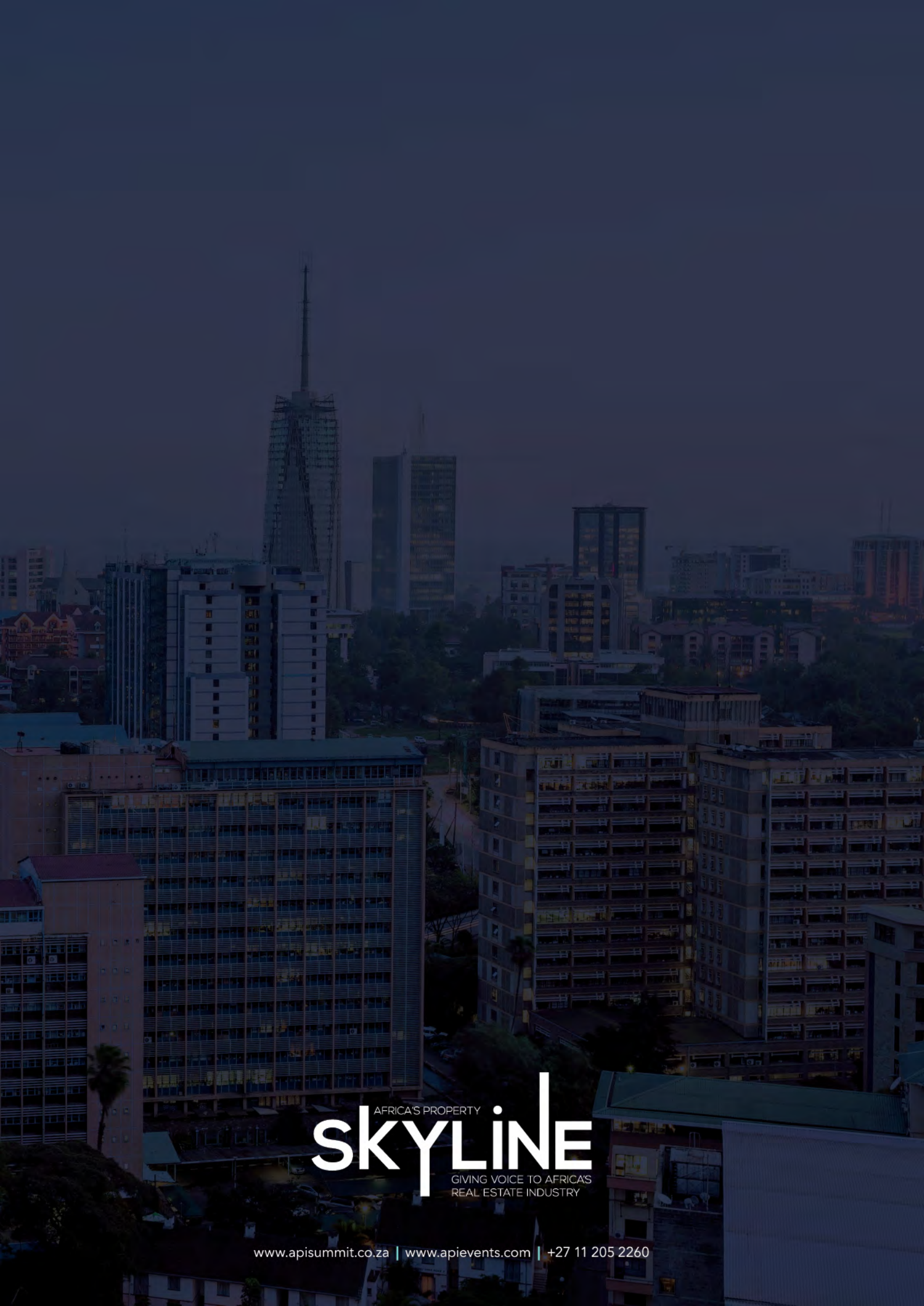
TRIM
420mm x 297mm

PLEASE NOTE

40mm center margin
Do not place any important text or detail in this margin

| SKYLINE | SIZE | SINGLE INSERT | | 2 INSERTS PER INSERT | | COMPANY PROFILE (ADVERTORIAL) | |
|--------------------|------------------------------------------------------------------|---------------|----------|----------------------|----------|-------------------------------|-----------------------|
| | | ZAR | USDD | ZAR | USDD | ZAR | USDD |
| DPS | 420mm(w)x297mm(h) | R12 250,00 | \$945,00 | R10 500,00 | \$805,00 | 2 Pager | R14 000,00 \$1 075,00 |
| Full Page | 210mm(w)x297mm(h) | R9 500,00 | \$730,00 | R8 450,00 | \$650,00 | 3 Pager | R17 500,00 \$1 345,00 |
| Half Page | Vertical 105mm(w)x297mm(h) Horizontal 210mm(w)x148mm(h) | R6 250,00 | \$480,00 | R4 750,00 | \$365,00 | 4 Pager | R22 500,00 \$1 730,00 |
| One Third Page | 70mm(w)x297mm(h) | R4 875,00 | \$375,00 | R3 875,00 | \$300,00 | | |
| Quarter Page Strip | 210mm(w)x80mm(h) | R4 150,00 | \$320,00 | R3 000,00 | \$230,00 | | |

* Prices excl. VAT.



AFRICA'S PROPERTY

SKYLINE

GIVING VOICE TO AFRICA'S
REAL ESTATE INDUSTRY

www.apisummit.co.za | www.apievents.com | +27 11 205 2260